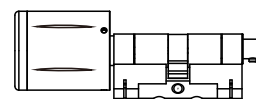


5A01 SMART CYLINDER

Scope of delivery



Electronic knob cylinder x1



Inside knob x1



User cards X2



Battery (Lithium CR2) x2

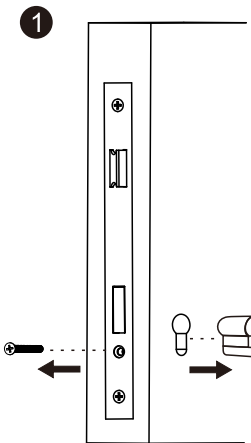


Allen key x1

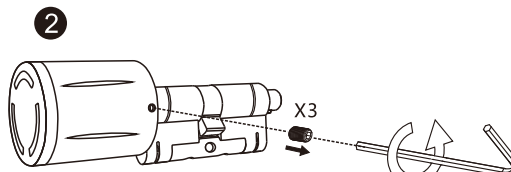


Screw x1

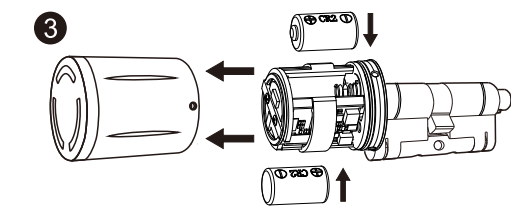
Installation instructions



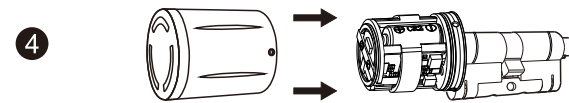
Remove your existing cylinder.



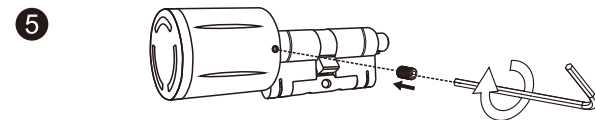
Use the allen key to unscrew the knob cover.



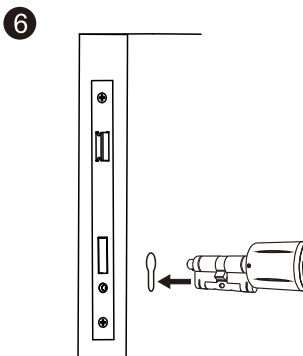
Open the knob cover and put the new batteries inside.



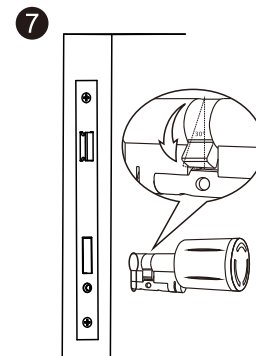
Refit the knob cover



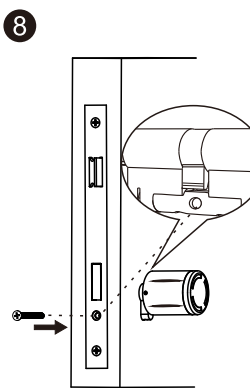
Use the allen key to fix the 3 screws into the cover.



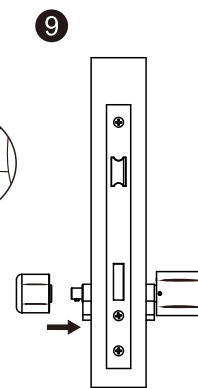
Put the cylinder into the hole.



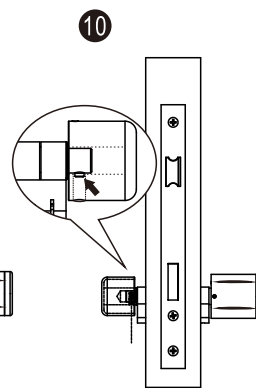
Turn the cam by 30 degree to put the cylinder into the hole.



Fix the cylinder screw.



Mount the inside knob from the inside of the door.



Make sure the mounting pin fix well.

Functional features

Function	Specification
Encrypted communication	Encrypted communication is carried among lock-app-server,
Door opening records	Unlocking method + unlocking ID + time Users can get the door opening records in recent 6 months through the app. No data lost.
Cache	The electronic cylinder can cache each door opening record locally. The data will be automatically synchronized to the app,when the app is connected with the cylinder via Bluetooth.
Alarm	Low battery alarm, door opening alarm
Manage users	Adding new usders by app.
Power status display	Power value or status
Door opening via app	After bluetooth connection is established between the mobile phone and the cylinder,you can open the door directly via the app.
New user cards added via app	After connection is established between the mobile phone and the cylinder via bluetooth, you can add new user cards via app.
Share in a specified validity period	Administrators can create a user with a specified validity period via the app.
Door opening mode synchronization	After direct connection with the app, the door opening methods synchronize between the cylinder and cloud.

Instructions

1.Download the app



Scan the QR code and download the app

The App for IOS can be downloaded from app store.

The App for Android can be downloaded from google play, Application treasure, Baidu, Ali, Huawei and Mi etc stores.

2.Register an account number

Please sign in with your mobile phone number or email address, or you can use your Wechat or QQ numbers to sign in.



3.Create a family

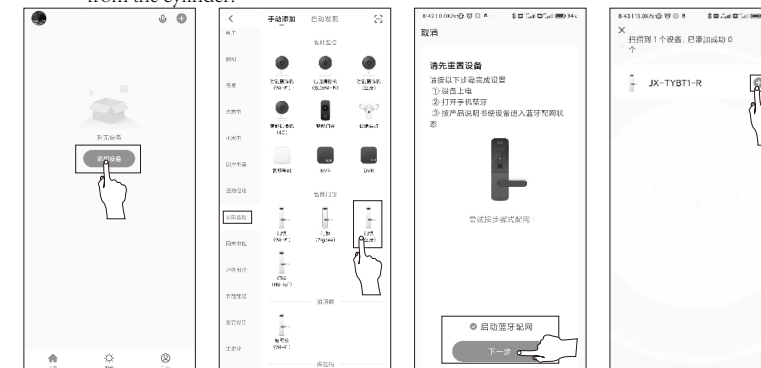
Enter the "my" page, click "family management", select the "create a family", fill in the family name, the family location, the required room and then save the page to complete the creation of the family.



4.Add an electronic cylinder

Enter the main page, click "add a device", select "security monitoring", and then select "lock (Bluetooth)" option. After entering the option page, click "start Bluetooth network" and click "next". It will take 1-2 seconds to automatically display the cylinder, and click "Add" to complete all the steps.

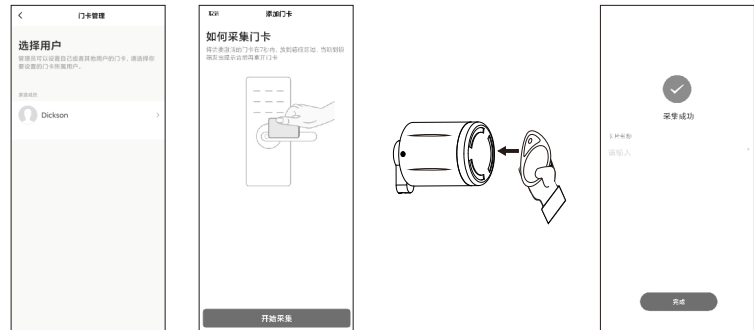
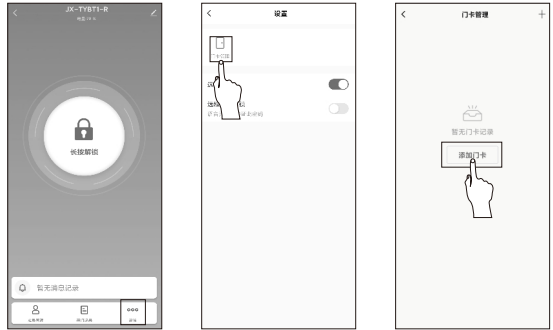
Turn on Bluetooth of your mobile,and make sure the mobile phone is not far from the cylinder.



5.Add a new user card

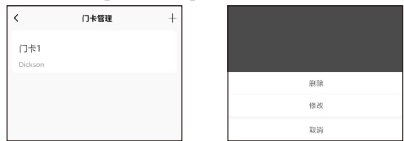
Enter the main screen, click "setting", and click "user card management", then click "add a new user card", select the user to set up the user card, and then click "start collection". When the green light of electronic cylinder flashes, please place the new card in the sensing area of electronic cylinder within 7 seconds. The app will indicate that the collection is successful, and then the operation of adding a new user card is completed.

If the app indicates that the adding of a new card fails, it means that the new user card has been activated or the operation has timed out.



6.Delete the user cards

Enter the main screen, click "setting", and click "user card management", then choose the user cards which are going to be deleted, select "Delete" to complete the operation of deletion.



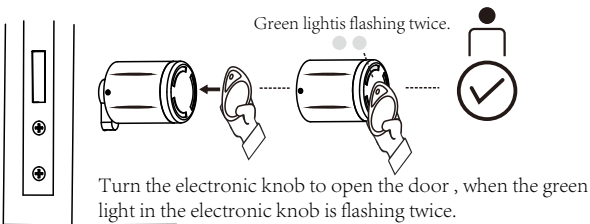
7.Add a new user

After you enter the electronic cylinder main page, please press "+" in the upper right corner to go to the invitation screen.

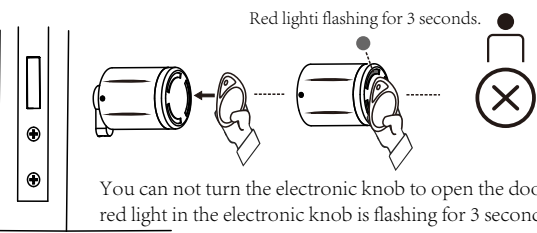


8.Door opening

User cards to open the door

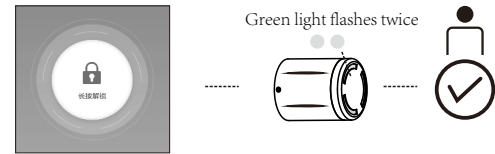


Turn the electronic knob to open the door, when the green light in the electronic knob is flashing twice.



You can not turn the electronic knob to open the door, when the red light in the electronic knob is flashing for 3 seconds.

Use the app to open the door



Long press the "long press unlock" button on the home page of the app, and the green light flashes twice, indicating that the door opening is successful. You can turn the knob to open the door.

9.Door opening record



In the door opening log, you can get the opening records, which are arranged in reverse order. The unlocking account associated with the user name will directly display the corresponding user name, and the unlocking account number not associated will display the specific unlocking ID.

10.Low battery alert

The alarm information of low battery and door opening can be checked in the alarm entry of the home page. When the electronic cylinder is connected with the mobile phone via Bluetooth, the alarm will be displayed to the app, otherwise the record will be cached in the local cylinder, and the transmission will be carried out after the electronic cylinder is connected with the mobile phone via Bluetooth when the door is opened next time. Replace the battery within 3 days after the low battery alarm.



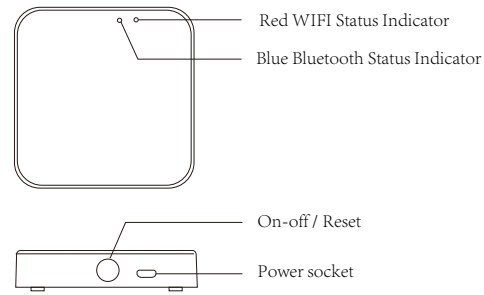
11.Reset settings

Please press the icon in the upper right corner to go to the DELETE screen, then select "UNBIND & DELETE". When the mobile phone app is connected to the door lock via Bluetooth, all the door opening modes of the device will be deleted by reset-settings operation, meaning the factory reset option and a new user can add the electronic cylinder again through the app.



12.Supporting Bluetooth gateway (to be purchased separately)

- Power up the gateway. Please turn on Bluetooth of your mobile phone and connects to 2.4G WiFi (please note that if the router supports both 2.4G and 5G modes, the mobile phone must be connected to the 2.4G network and does not support 2.4G and 5G mixed modes).
- After the gateway is powered on, please check if the distribution network indicator blue light is on. If not, press and hold the reset button near the power socket until the blue light is on. (as shown in figures 1 and 2).



- Click the "add a device" button or "+" in the upper right corner, then select the device type "gateway and others" - wireless gateway (Bluetooth), as shown in Figure 1

- As shown in Figure 2, reset the device and confirm the red light is flashing, then search the device and complete the addition (as shown in figures 3, 4 and 5).

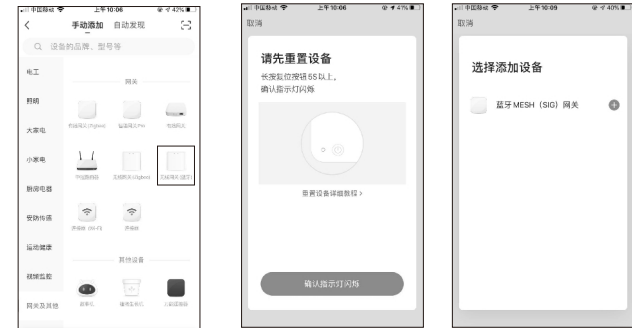


Figure.1

Figure.2

Figure.3



Figure.4

Figure.5

- There are two ways to add a Bluetooth electronic cylinder under the Bluetooth gateway. Enter the Bluetooth gateway device app (as shown in Figure 1):
Method 1: add the bound Bluetooth electronic cylinder, select "add in the list", and jump to the list of Bluetooth electronic cylinder that has been added (as shown in Figure 2);
Method 2: add a new Bluetooth electronic cylinder, select "search for new device", directly click "indicator is flashing" (as shown in Figure 3) on the pop-up page, and wait for the gateway to automatically complete the network distribution (as shown in Figure 4).

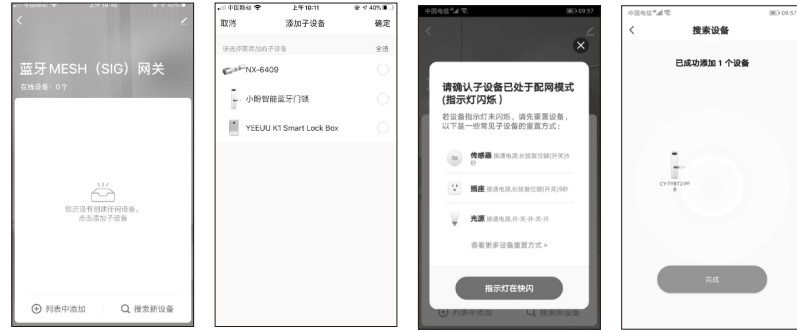


Figure.1

Figure.2

Figure.3

Figure.4

! Attention

